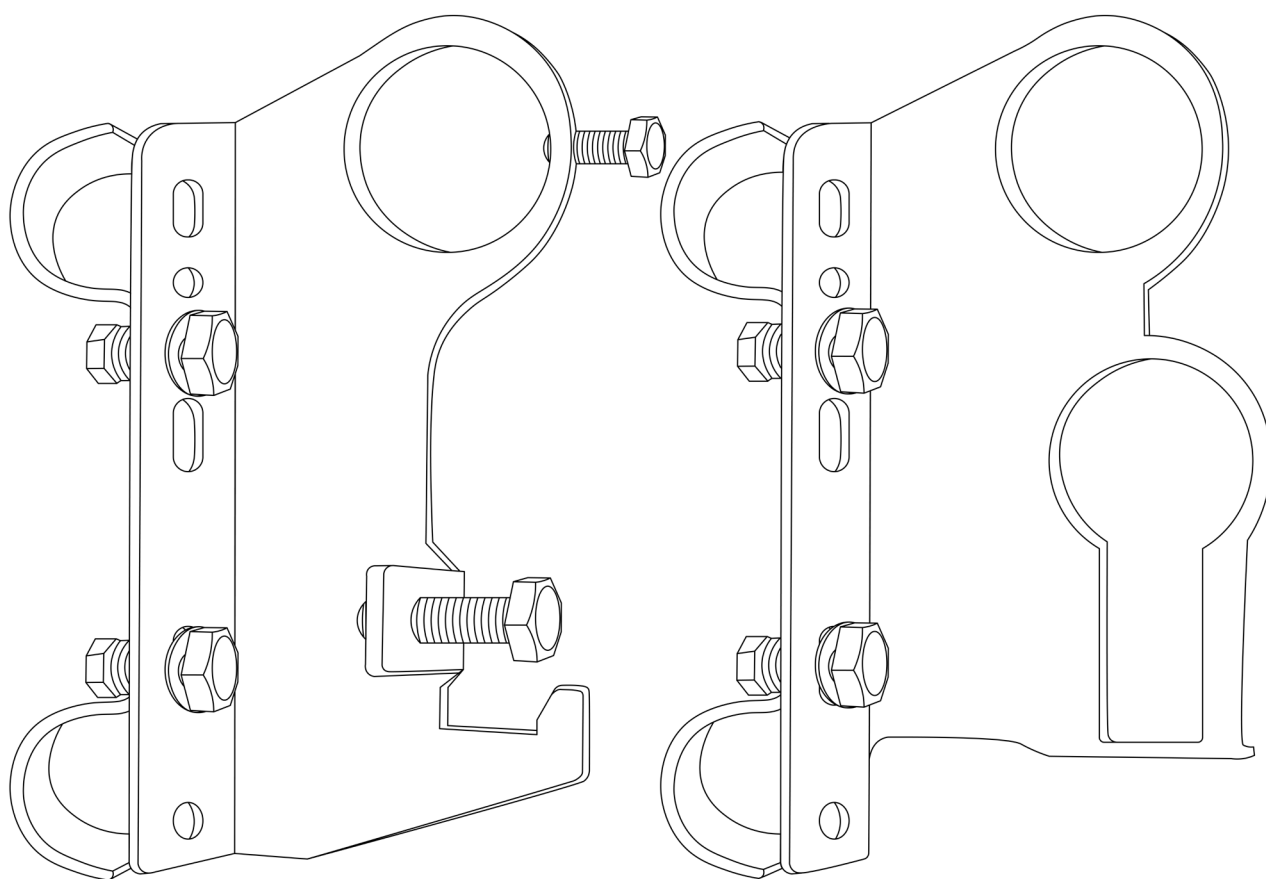




HERCULES SHOVEL AND JACK HOLDER USER MANUAL

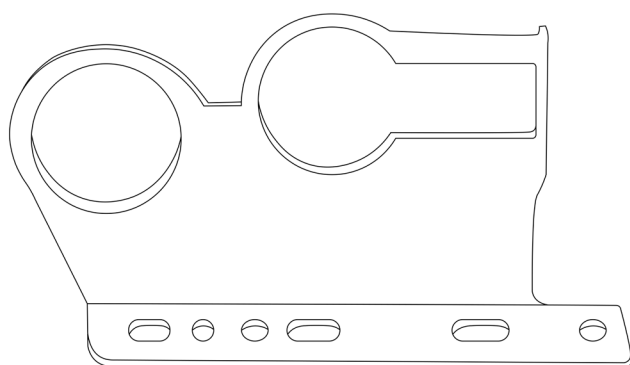
HCAC-HLSJHX



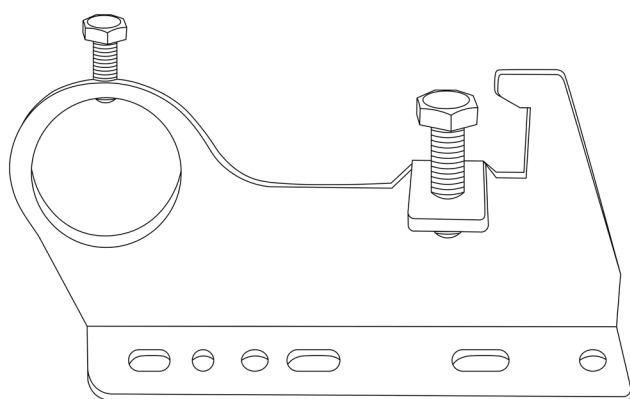
V1.1

**PLEASE READ AND UNDERSTAND THIS MANUAL
COMPLETELY BEFORE USING THIS PRODUCT.**

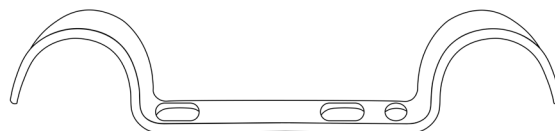
1. COMPONENTS



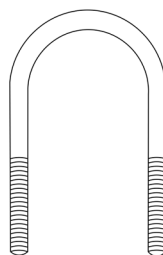
A x 1



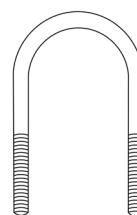
B x 1



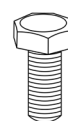
C x 2



D x 2



E x 2



F x 4



G x 12



H x 16



I x 12

2. SET-UP INSTRUCTIONS

STEP 1:

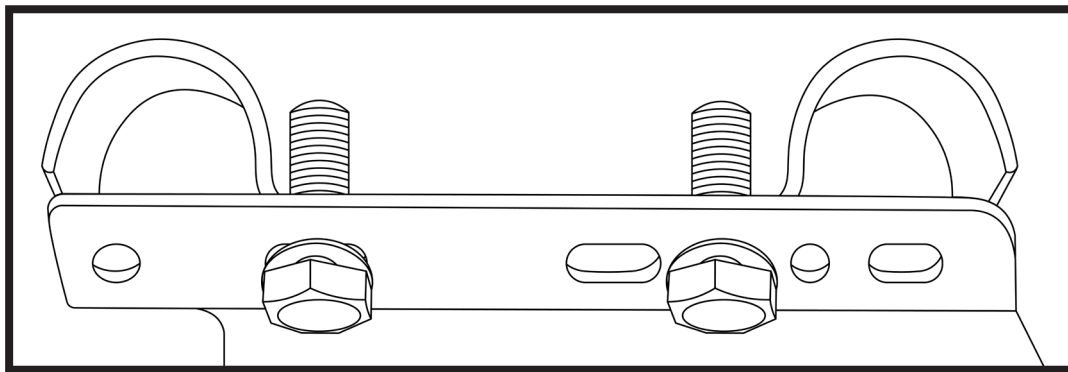
Place the two (C) plates on the internal side of your roof rack, the larger C channel hugs the lower bar on the roof rack while the shallow C channel hugs the top bar.

STEP 2:

Ensure that the holes for the shovel are on top, then hold the front plate (A) and it's corresponding back plate (C) in place and line up the bolt holes.

STEP 3:

Attach the split washer (I) and washer (H) onto the bolt (F) before sliding it into the designated bolt holes illustrated in the diagram below.

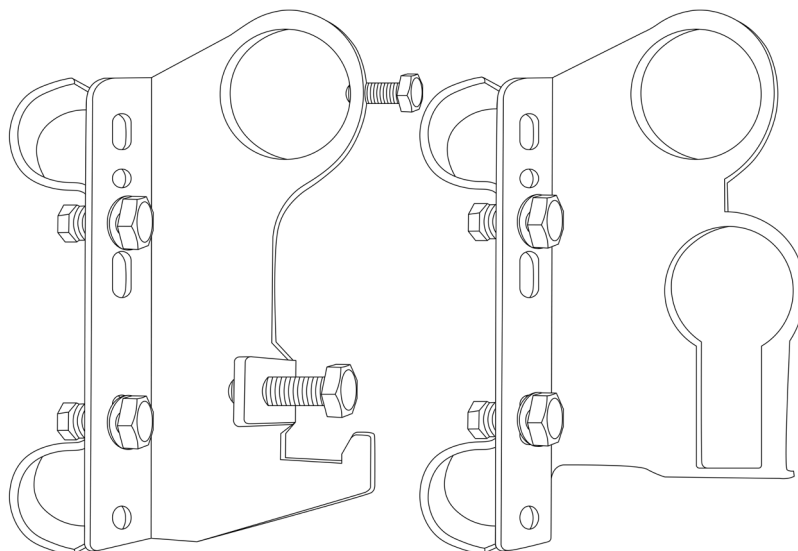


STEP 4:

Place a washer (H), split washer (I) then followed by a nut (G) onto the back side of the bolt (F). Repeat steps 3 and 4 for the other hole to securely attach it on to the roof rack.

STEP 5:

Once complete, repeat this process for plate (B) to mount the other bracket into place.



3. U-BOLT SET-UP INSTRUCTIONS

STEP 1:

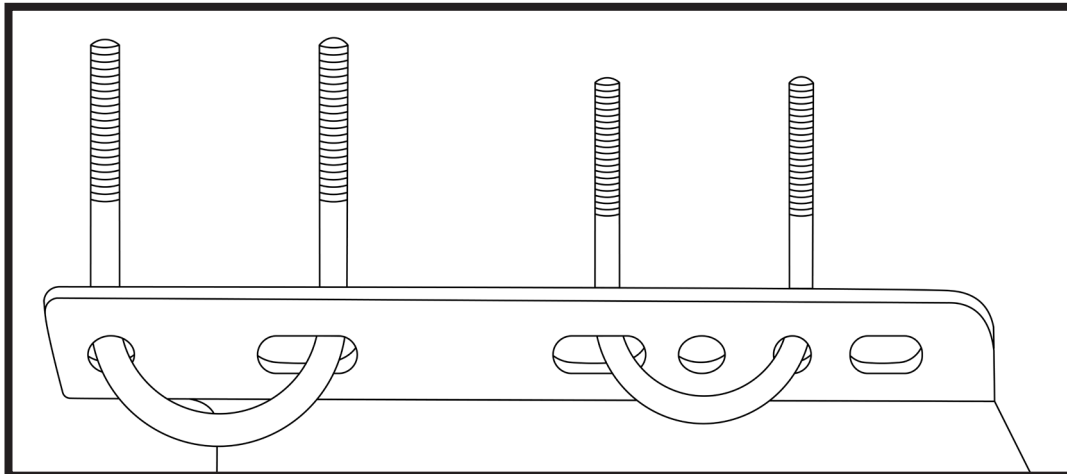
Place the two (C) plates on the internal side of your roof rack, the larger C channel hugs the lower bar on the roof rack while the shallow C channel hugs the top bar.

STEP 2:

Ensure that the holes for the shovel are on top, then hold the front plate (A) up against the roof rack bar in the desired position.

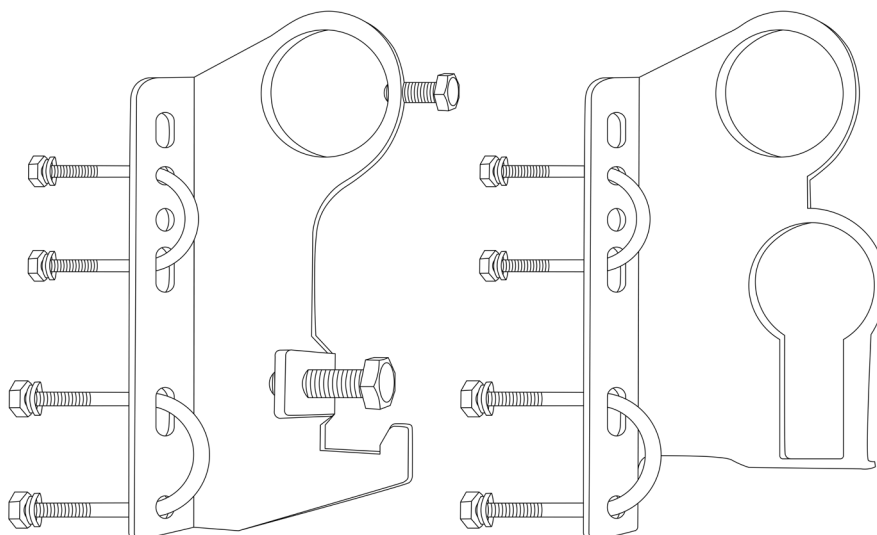
STEP 3:

Place the U-Bolt (E) and U-Bolt (D) in the top bolt holes as indicated below. Attach the split washers (I), washers (H) and nuts (G) onto the U-Bolts (E & D) to tighten and secure them onto the roof rack.



STEP 4:

Once complete, repeat this process for plate (B) to mount the other bracket into place.



12 MONTH LIMITED WARRANTY

WARRANTY PERIOD:

Full 12 month warranty from date of purchase against all manufacturing defects.

WHAT DOES THE WARRANTY COVER?

Under normal usage conditions, this warranty covers:

- a. Any defect in design or manufacture which results in the product failing to perform substantially as described in authorised advertising or literature.
- b. We will either repair or replace the product at our discretion providing that the fault is found to have been caused by a design or manufacturing defect and not misuse or tampering.

Our goods come with guarantees that cannot be excluded under the Australian Consumer Law. You are entitled to a replacement or refund for a major failure and for compensation for any other reasonably foreseeable loss or damage. You are also entitled to have the goods repaired or replaced if the goods fail to be of acceptable quality and the failure does not amount to a major failure. The benefits provided to you as the consumer by this warranty are in addition to other rights and remedies available to you under the law.

THE WARRANTY DOES NOT COVER:

- a. Any damage resulting from improper use
 - b. Faulty installation or modification made during installation
 - c. The cost of removing and reinstalling the product
 - d. Travel and /or other expenses due to customer's remote location
 - e. Transport charges and damage in transit. It is your responsibility to deliver and pick up your product, including any costs associated with the postage of your repair or replacement product. If you do freight your product we recommend that you insure against loss or damage.
 - f. Any loss directly or indirectly associated with the product failing to operate.
 - g. Damage caused by mould, insects, animals, misuse, incorrect operation, adverse weather, accidents and fair wear and tear
-

TO MAKE A CLAIM, PLEASE ENSURE YOU RETAIN YOUR SALES RECEIPT OF PURCHASE

1800 88 39 64



OUTDOOR SUPACENTRE PTY LTD
2 Stanley St Silverwater NSW, 2128
PHONE: 1800 88 39 64
www.4wdsupacentre.com.au